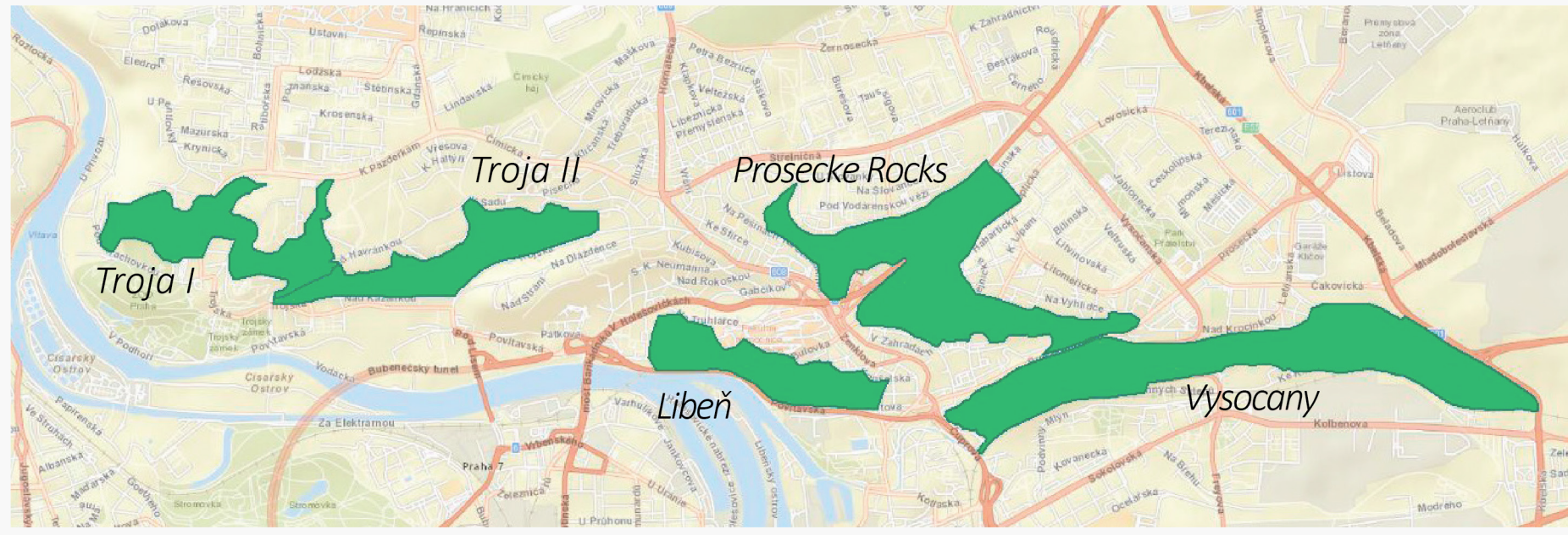


# Troja I



## Introduction



Welcome to Troja I, located near the river Vltava, in the northern part of the city of Prague. The Prague Zoo, Trojského zámku and the Botanická Zahrada attract more than a million people to this area every year. Apart from the cultural attractions, Troja I houses two Natura 2000 sites, where special spiders and flowers can be found.

Historically, the area was used for vineyards, orchards and agriculture. Nowadays most of the area is mixed forest and grassland. Still a few orchards and wine ranks can be found, of which Salabka, a private operator, owns the largest vineyard.

Troja I has all the qualities to become an even more attractive area, where human activities and nature go hand in hand.

## Use



The area is mostly visited by residents of the area and nearby neighbourhoods who go for a walk to get some fresh air. A lot of visitors were accompanied by children and/or dogs. Also mountain bikers and runners go to the area for some exercise.

Besides sports Troja I offers activities like food picking (i.e. cherries), barbequing and picnicking.



There are several viewpoints from the hillside on the city, in some cases the view is blocked by trees. The other way around, from the city, the hillside provides a green scenery. However, from some places the apartment buildings of the neighbourhood in the north (Bohnice) are visible in the background.



Although the Prague Zoo, Trojského zámku and the Botanická Zahrada attract many people, little of them also visit the surrounding area.

## Management

- As a general rule management is carried out by owners of each specific plot.
- A clear division within departments of the city are difficult to find because these are not known by all stakeholders.
- Plots owned by the nature conservation department of city of Prague are maintained by grazing sheep flocks and bush cutting to prevent overgrowing.
- Bins were placed, but were destroyed by vandalism.
- Signs that indicate i.e. walking/mountain bike routes and viewpoints are lacking or could be more precise.
- The fences in the area are in contrast with the landscape.



## Actors

- The municipality of Prague owns the majority of the land in Troja I.
- Parts of the area are used and maintained by several stakeholders.
- They have different and sometimes competing interests.



## Green



The area consists of different vegetation, like forest, grassland, and bushes .

In the area it is possible to pick cherries , elderflower and mushrooms.



On the hillside several vineyards and gardens can be found.

The diverse vegetation in the area prevents erosion and facilitates the infiltration of rainwater.



The area supports an important population of insects .

## Connectivity

- The area is good accessible by car, bike, bus and ferry .
- The Botanická Zahrada , located in the middle of Troja I, disconnects the east and the west of the forest by fences and can be seen as a barrier for species and humans to move.
- The green hillside is a barrier between the neighbourhood Bohnice in the north of Troja I and the city centre of Prague.
- The area is connected to Troja II in the east and together with this area works as a green corridor from east to west (and visa versa). On the west side, the area borders the river Vltava, along the river towards the north the green corridor continues.

## Scenarios

